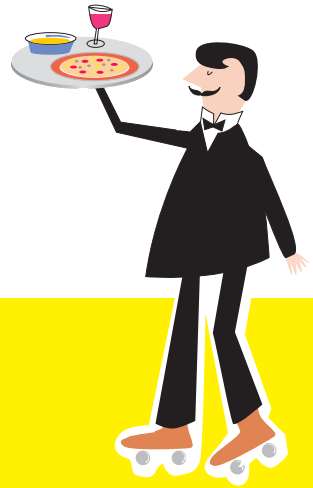




**the internet**



**meals on wheels**

# Leeds Disability Directory



**transport**



**benefits**



**holidays  
& respite  
care**



↑  
Click here  
for Help



↑  
Click here  
for Contents

**and lots  
more...**



## PREFACE

Many people have been involved with the production of the new Disability Directory – volunteers, paid staff and users of the service.

Haley Dyer is both volunteer and user of services, and has been involved in the booklet's production from the beginning.

**'Being involved with the development of the directory has been a real eye opener to the difficulties and hiccups that can occur in any creative process! It has been exciting to see something come together for use across a wide spectrum of people. I hope it will be useful not only to the general public, but also to staff working within all the different organisations. Hopefully this is just the beginning of better things to come, resulting not only in improving the disabled person's life, but empowering disabled people to take more control in the way their life is run, giving back and improving society as a whole. Only time will tell !'**

*Hayley Dyer, December 1998*

**Part 1**

**Introduction** 4

**Directory of Services** 6

**Part 2**

**Benefits** 45

**Benefits Agency Offices** 47

**Citizens Advice Bureaux** 48

**Welfare Rights Advice Surgeries** 54

**Social Services Offices** 56

**N.H.S. Hospital Services** 58

**Publications** 60

**Approved Home Care & Home Nursing Services** 62

**Reply Page** 63

**Interactive Index** 65

**How to use this guide** 69



## INTRODUCTION

**This booklet is all about where to get services and support for people with physical or sensory impairment in Leeds.**

**It's intended as a brief guide to point people in the right direction. It's not a detailed listing of everything – this is available elsewhere, in other booklets and directories (see the end for a listing of where to get more information).**

### time of change

This is a time of considerable change in the way that services are organised and supplied.

Many of the organisations and contacts will however remain the same and we think the information in this booklet will be useful for some time to come.

### produced by

This directory has been put together by a group of people from many agencies, including Social Services, health and voluntary organisations. A number of them contributed large sections of information and many individuals have also contributed to it – many thanks to all those who have been involved.

The work has been co-ordinated by the inter-agency project *Information to Service Users*, and financed mainly by Joint Funding (Social Services and Health Service). A special thanks should go to Pat Parker at Social Services.

### keeping up to date

Great care has been taken to make sure that the information in this directory is accurate and up to date at the time of compilation (late 1998). We cannot however take responsibility for mistakes or omissions. If you know of changes and additions do please let us know. There is a reply slip in the back – many thanks.



## INTRODUCTION

### telephone numbers

All the telephone numbers in this directory are Leeds numbers unless otherwise stated. If you're calling from outside Leeds, the code is 0113.

### no approval

Inclusion in the directory does not necessarily mean that we recommend or approve of the organisation listed, and we cannot be held responsible if they do not prove satisfactory.


### more copies

If you need more copies of this directory, they should be available from One Stop Shops, Social Services offices, some health centres, etc or from the Dept. of Social Services Head Office, Merrion House, 110 Merrion Centre, Leeds LS2 8QB ☎ 247 8630.

### other formats

There is a large print version of this directory, and a tape and Braille version, for details contact the main Social Services office, the nearest local Social Services office (see page 56) or the Leeds Centre for Blind and Partially Sighted People, Shireview, 72 Headingley Lane, Leeds LS6 2DH ☎ 214 4544.

The directory and future updates are available on the Internet. ([www.leeds.gov.uk/disability](http://www.leeds.gov.uk/disability))  
Contact D.I.A.L ☎ 268 2689 for more details.

**NOTE:** If something is written in blue and has the symbol  beside it, then you can look it up elsewhere in the booklet by clicking over the symbol.

© Leeds Social Services. No part of this directory may be copied or used for any commercial purpose without permission.

Edited and compiled by Mike Sells with the assistance of Pat Parker. Contact at Leeds Social Services, Merrion House, 110 Merrion Centre, Leeds LS2 8QB ☎ 247 8676

Initial Design and layout by Demo.graphics ☎ 0113 228 5500  
Interactive Design by The Graphics and Communications Group ☎ 0113 247 8083

Printed by Simba Print, Leeds ☎ 0113 244 3091

## Access

📞 see also [Accessible Information](#)

A new Access Guide to Leeds is now available with details of accessibility of buildings in Leeds and a directory of leisure sites.

Contact **Leeds City Council Equal Opportunities**

☎ **247 4769**, minicom **224 3589** for details.

'*Let's Go Out and About*' is an access guide to tourist and leisure sites in Yorkshire and North Lincolnshire. Available from **The Yorkshire Association for Disabled People, St George's House, 7–9 Harlow Oval, Harrogate, HG2 0AA** with cheques made payable to the YADP for £1.00, or from most Tourist Information Centres.

## AccessBus

Is an accessible door-to-door bus service which operates in West Yorkshire. The buses have wheelchair lifts. The service is free to disabled people who are permanently or temporarily unable to use public transport. It is necessary to telephone beforehand, firstly to register as a user and then to make each booking. The service finishes at 5.30pm.

For further details telephone the enquiry line ☎ **01274 304297**  
*Mon–Fri between 7.30 am–3.30 pm.*

## Access Committee

There are groups of people in each of the **Resource Centres** campaigning for improving access to facilities and buildings in Leeds. For further details contact the nearest Resource Centre.

## Accessible Information

📞 see also [Libraries](#)

The following organisations can transcribe information into accessible formats:

**Braille and Large Print Unit** c/o Leeds Centre for Blind and Partially Sighted People, Shireview, 72 Headingley Lane, Leeds LS6 2DH

☎ **214 4540.**

**Yorkshire Braille Service** ☎ 268 4863.

**RNIB & Leeds University Braille and Taping Service** ☎ 233 3928.

Can produce Braille and audio tapes.

**Leeds Talking Newspapers and Leeds Talking Magazine for the Blind Association**

**c/o Leeds Centre for Blind and Partially Sighted People** ☎ 214 4535.

(see page 6 for address. They can also produce audio tapes).

## Access to work

👁 see [Employment](#)

## Adaptations in the Home

👁 see [Equipment](#)

## Advice and Information

A number of organisations provide general advice and information to disabled people and their carers. All of these organisations are listed separately in this guide:

**D.I.A.L** (Disablement Information and Advice Line)

**Carers Centre** advice for Carers.

👁 see also [Carers National Association](#)

👁 **Age Concern** for older people.

👁 **Community Health Council** about health services.

**Citizens Advice Bureau** general money/benefits advice.

👁 see page 48 👁 see also [Welfare Rights Unit](#)

**Leeds Centre for Blind and Partially Sighted People**

👁 see entry for [Blindness](#)

**Voluntary Action Leeds** (Information Service) voluntary organisations.

👁 see [Voluntary Organisations](#)

👁 **Resource Centres**

👁 see also [Leeds Centre for Integrated Living](#)

👁 **Social Services**



## Advocacy

There are a number of advocacy services in Leeds.

**Leeds Advocacy** ☎ 244 0606 provides a service for people with a learning disability.

**Advocacy and Interpreting Service** ☎ 235 1877 provides a service to Chinese, Bangladeshi and Pakistani communities to improve access to health and social services.

**Age Concern Advocacy Service** ☎ 245 8579 a service for older people.

**Mental Health Advocacy** ☎ 247 0449 for users of mental health services whose needs may be long term.

**Leeds Centre for Integrated Living** ☎ 214 3599, minicom 214 3598.

## Age Concern Leeds

Provides information, advice and services. For further details and leaflets, contact at **188a Woodhouse Lane, Leeds LS2 9DX** ☎ 245 8579, or at the drop-in/café at **St John's Hall, Mark Lane, Leeds** (behind Alders) ☎ 245 7154.

## Alarms – Care Ring (Pendant Alarms) Leeds

'Care Ring Leeds' is an emergency contact telephone line for disabled and elderly people, either living alone, or with a person who is unable to deal with an emergency. The Emergency Control Centre is operated 24 hours a day, 7 days a week. For further information contact **Care Ring at Housing Advice Centre, 21/27, The Headrow, Leeds** ☎ 224 3485, minicom and fax 224 3483.

At the time of printing the cost of the line is £1.10 per week plus VAT for council tenants, and £2.20 per week plus VAT for private home owners. (Most people do not have to pay the VAT on this). There is also a one-off connection fee of £10. You may be able to get help with the cost from Social Services.

There are also private alarm systems, see advertisements in the press etc. or contact **Housing Advice** ☎ 247 6919, minicom 247 4000.



## Ambulance Services

N.H.S. hospitals in Leeds provide a Patient Transport Service for patients unable to use public transport or their own car etc. Referrals to the service can be through a G.P. or the hospital department.

The service can be used for in-patient and out-patient appointments.

Private ambulance services are listed in Yellow Pages.

## Assessment

👁️ see [Community Care](#)

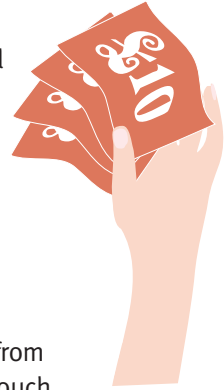
## Attendance Allowance

👁️ see [Benefits](#) section page 45

## Benefits

The Benefits Agency used to be known as 'Dept. of Social Security', 'DSS' or the 'DHSS'.

👁️ At the back of this booklet, in Part 2 there is a list of the [Benefits Agency](#) offices in Leeds, and details about the main benefits. See pages 45–46.



## Blindness & Sight Loss

👁️ see also [Accessible Information](#)

**Information** in large print, braille, or on tape is available from the local Social Services office, where you can be put in touch with a Rehabilitation Officer for visually impaired people, who can make home visits.

👁️ See local [Social Services](#) offices pages 56–57

### **Leeds Centre for Blind and Partially Sighted People**

The new centre is in Headingley, close to St Michael's Church and the 'Original Oak' Pub. It provides advice, information and assistance to people with any sort of sight loss. There are displays of equipment to encourage independence, rehabilitation support, communication facilities (including Braille, large print and cassette services) as well as educational, recreational, social and health provisions. Contact directly:

**Shireview, 72, Headingley Lane, Leeds LS6 2DH ☎ 214 4544.**

**Sight Loss** A range of services is available for people who have greatly reduced vision which is not correctable by spectacles. A G.P. can make a referral to an Ophthalmic Consultant.

Some Opticians are able to make home visits. **The West Yorks Central Services Agency (Family Practitioner Committee) Brunswick Court, Bridge Street, Leeds LS2 7RL** can help find one who will. ☎ 295 2500.

People with considerable loss of sight may be able to be registered as blind or partially sighted – see your G.P. to start the process. Some services are only available if you are registered.



## Buses

👁️ see also [AccessBus](#)

There are a number of 'kneeling' and low-floor buses in Leeds but no fully accessible buses at present. There are no dedicated routes for these low floor buses. In 1998/99 local bus companies should be increasing the numbers of accessible buses and are researching routes where improved services can be introduced. For more information contact **Leeds City Link** ☎ 245 1601.

## Bus and Rail Passes

The Disabled Persons Railcard costs £14 at the time of print, and is valid for 12 months from date of purchase. The card gives discounts of up to a third on a range of tickets. An adult accompanying the railcard holder can also travel at the same reduced fare.

Further details and an application form are in the booklet '*Rail Travel for Disabled Passengers*' available from most main line stations or from **Customer Services** at **Leeds City Station** ☎ 247 9692. Customer Services can also give details about rail services.

Metro runs three concessionary schemes – for older people, for disabled people and for blind people – covering bus and rail travel in West Yorkshire. Full details regarding eligibility are given in '*Travel Concessions for Elderly, Disabled and Blind People*' available from **Leeds City Bus Station** ☎ 245 7676.

## Care and Repair

👁 see [Housing Repairs and Grants](#)

## Care Ring (Pendant Alarm)

👁 see [Alarms](#)

## Careers

👁 see also [Employment](#)

Leeds Careers Guidance service provides information and advice about options for further and higher education, pre-vocational training courses, employment opportunities and financial help for continuing education. It offers guidance to all young people up to the age of 21, and to disabled people till they are settled in their career intention. Contact **Leeds Careers Guidance Service, 1 Eastgate, Leeds LS2 7LY** ☎ **0800 106699**. The service has a Specialist Careers Advisor available on **ext. 263**.

**SKILL National Bureau for Disabled Students, 4th Floor Chapterhouse, 18/20 Crucifix Lane, London SE1 3JW** • Helpline ☎ **0800 328 5050**. Provides a comprehensive information and advice service for disabled students.

## Carers

👁 see also [Carers Centre](#)

There are many services that might be useful to carers:

Family Placement services; Sitting services; Care Attendant schemes (providing someone to relieve a carer in the home); longer-term breaks away from home – provided in residential and nursing homes, holiday centres or occasionally hospitals.

Contact the local Social Services office for more details, pages 56–57

There is an updated version of a booklet ‘*Choices for Carers*’ available from [Social Services Offices](#). See pages 56–57.

## Carers Centre

The Carers Centre offers information, advice and support to all carers.

☎ **246 8338** (Mon–Fri, 9.30am–4.30pm), or drop-in to the Centre at **Leeming House** (next door to Boots in the Market), **Vicar Lane, Leeds LS2 7JF** (Tues–Thurs, 9.30am–4.30pm).

## Carers National Association

This is a registered charity which aims to support carers – people who look after a disabled relative or friend. They offer telephone support and information to all carers whether members or not.

**20/25 Glasshouse Yard, London EC1A 4JS.**

**Carers Line** ☎ **0345 573368** (charged at local call rates)

**Leeds** ☎ **0113 258 5579** • **London** ☎ **0171 490 8818.**

## Cars

👁 see also [Orange Badges](#), [Motability](#)

Assessment Centres can provide assessment of driving ability and advice on equipment, adaptations and conversions for cars. D.I.A.L has details of commercial and non-commercial assessment centres.

Telephone **D.I.A.L** on ☎ **268 2689.**

### Conversions and Adaptations

#### The William Merritt Disabled Living Centre

☎ **279 3140** can provide details of companies that provide equipment and carry out conversions to cars. Controls and their installation, repair and maintenance will be exempt from VAT

(👁 see [VAT](#) entry). Individuals who are buying their car through Motability can apply to the Motability Charitable Fund or the Motability Equipment Fund if they cannot meet the costs of adaptation in any other way. Contact the **Motability Helpline** ☎ **01279 635666** for further information.

**Learning to Drive** Some driving schools have adapted cars. D.I.A.L has a list of local instructors.

## Centre for Integrated Living

👁 see the [Leeds Centre for Integrated Living](#)



## Children

There is now a set of information leaflets called 'You Should Know' which is for parents of with disabled children. There is a *Parents Guide*, a *Catalogue* and 17 *Factsheets*.

For further details or to get copies contact **Social Services** ☎ 247 8136 or a local health centre, or contact **D.I.A.L.**

## Chiropody

The Community Health Service provides a chiropody service to people in medical need. Priority groups include people with a physical disability, people over 65 and people with diabetes. Self referrals can be made using forms available from G.P. surgeries, health centres, clinics or by G.P.s, district nurses, health visitors etc.

## Citizens Advice Bureaux

👁 see pages 48–53

## Community Benefits and Rights

👁 see [Welfare Rights Unit](#)

## Community Care

The idea of 'Community Care' is to get people the support they need to live as independently as possible. All of the different welfare services – health, social services and private or voluntary services may be involved in getting people the help they need.

### **Assessment**

In order to start getting some help there will be some form of 'assessment' to see exactly what is needed and how it can best be provided. Social Services are responsible for assessing the needs of people living at home. For people being discharged from hospital there is a joint assessment involving Health and Social Services. The assessment will take into account the views of users and their carers, the aim is to provide the most appropriate services and support. There are charges for many services and some costs may depend on how much money you have. There is a financial assessment for services like a residential or nursing home, and for home care.

Contact the local [Social Services](#) office for more information pages 56–67.

**Leeds Involvement Project** organises training, information and consultation events about community care. They support service users and carers to work with Health and Social Services to improve the services.

**Leeds Involvement Project, Leeds TUC Centre, 88 North Street, Leeds LS2 7PN** ☎ 234 6868 or 234 6696 (Tel/fax).

## Community Care Plan

Has details of plans for Community Care services in Leeds. It is revised each year. You should be able to get a copy from the local Social Services Dept. or write to **Joint Planning, Dept. of Social Services, Merrion House, 110 Merrion Centre, Leeds LS2 8QB** ☎ 247 7396 or 247 7095.

## Community Health Council

Gives advice and help to people who use the National Health Service, welcomes any general comments or suggestions about health services and assistance in making a complaint (👁 also see [Complaints](#)). Produces a free booklet on 'Health Related Self-Help Groups in Leeds'.

**Community Health Council, 3-4 Templar Street, Leeds LS1** ☎ 245 7461.

## Complaints

If you have a complaint, comment or compliment about anything to do with health services you can contact the G.P., surgery or hospital directly or contact the **Complaints Manager at Leeds Health Authority** ☎ 295 2104.

The Community Health Council can also advise you how to go about making a complaint.

If you have a complaint, comment or compliment about Social Services contact the **Designated Complaints Officer at Merrion House** ☎ 247 8627.



## Contenance

There is a Contenance Specialist/Advisory Service which provides advice and support on all aspects of continence care and management.

Details can be obtained from:

**The Contenance Care Manager, St Mary's Hospital, Armley ☎ 279 0121.**

If you would like to speak to someone confidentially, contact the above and they will provide details of the nearest clinic.

## Counselling

👁 see also [Peer Support](#), [Support Groups](#)

Some national disability organisations provide counselling services.

**D.I.A.L ☎ 268 2689** has listings of local and national counselling services.

The Crisis Centre at Headingley provides short term counselling and support for people who are finding it hard to cope at a stressful time in their lives.

A counselling service is available to Deaf people – either by a Deaf Counsellor or by hearing counsellor plus interpreter. There are also facilities for hard of hearing people who need counselling.

Contact directly: **Leeds Crisis Centre, 3 Spring Road, Leeds LS6 1AD**

**☎ 275 5898**, minicom **274 8880** for an appointment, or via your G.P.

## Crime

Although the police do not have any services primarily for disabled people, a Crime Prevention Officer will give advice on the following numbers:

**East Leeds ☎ 241 3639**

**South Leeds ☎ 241 4639**

**West Leeds ☎ 241 4839**

**North Leeds ☎ 241 3432**

**Chapelton ☎ 241 3239**

**Central Leeds ☎ 241 3040**

## The Crisis Centre

👁 see [Counselling](#)



## Day Centres

- see Resource Centres

## Deafness

- see also Hearing Loss, Sign Language, Counselling

### LEEDS CENTRE FOR DEAF AND BLIND PEOPLE

Is a large community centre, offering advice, many services and equipment for people who are deaf, hard of hearing or deaf-blind in Leeds. The Centre provides the service on behalf of Leeds Social Services.

- For **Deaf people** (sign language users) the centre offers a Specialist Social Work team, Leeds Sign Language Interpreting Service – (• see also **Sign Language**), youth clubs, a mothers' and toddlers' group, and senior citizens' club. There are also a wide variety of sports and social activities provided by Leeds Deaf Social Club. A counselling service is available to Deaf people – either by a Deaf Counsellor or by hearing counsellor plus interpreter (• see also **Counselling**).
- For **Hard of Hearing People** (who have lost their hearing later in life) there is a Hard of Hearing Unit, which can advise and assess for special equipment, such as flashing light doorbells, vibrating alarms and TV listening devices.
- The **Deaf-Blind Unit's** specialist team offers support, assessment, equipment and day centre facilities for people who are both deaf and blind.
- **Deaf People with Additional Learning Disabilities** – The Centre's Communication Unit offers assessment, day centre provision and communication/sign language training.

For details on the above contact:

**Leeds Centre for Deaf and Blind People, Centenary House, North Street,  
Leeds LS2 8AY ☎ 243 8328** voice and minicom.

## Lipreading

There are lipreading classes in various areas of Leeds.

Phone the teacher C E Whitehead for more details. ☎ 258 8691.

## Deaf Equality Team

The team liaises between council departments and Deaf and hard of hearing people to improve access to council services and information.

**Social Services Department, Merrion House, 110 Merrion Centre, Leeds LS2 8QB** ☎ 247 6953, minicom 247 4330.

## Children, Deafness & Education: The Deaf and Hearing Impaired Service

In Leeds hearing impaired children are integrated into mainstream schools, where there can be extra support from Deaf instructors, communication support workers, and specialist and peripatetic teachers.

**Special Services Division, Blenheim Centre, Crowther Place, Leeds LS6 2SP** ☎ 242 9111 voice and minicom.

**Deaf Students Educational Support** Deaf Start (formerly Total Communication Unit) provides support for Deaf students in further education, eg. advice and careers guidance, sign language interpreters, notetakers.

**Special Services Division, Blenheim Centre, Crowther Place, Leeds LS6 2SP** ☎ 242 9111 voice and minicom. 👁 see [Sign Language](#)



## Decorating

There are a few schemes in Leeds that provide help with decorating. Many of them can only offer help to people in specific age groups or areas of the city.

Contact **D.I.A.L** ☎ 268 2689 for further information.

## Dental Care

👁 see also [Health Benefits](#) in [Benefits](#) page 45

If it is not possible for you to get to your dentist, a home visit may be arranged.

If you want to find a dentist contact:

**Leeds Health Authority** ☎ 295 2603  
(ask for Dental Contracts Dept.)



## D.I.A.L (Disablement Information and Advice Line)

Telephone helpline providing information and advice about most aspects of disability including housing, benefits, community care services, education and employment, holidays, support groups, sports and leisure activities and transport services. *Open 10.30am – 3.30pm. Monday to Friday.*

**Shadwell Centre, Shadwell Lane, Leeds LS17 8AG** ☎ + minicom **268 2689**  
e-mail: **d.i.a.l.ss@leeds.gov.uk**

Please note it is expected that D.I.A.L will move from Shadwell during 1999.

## Direct Payments

This is a system introduced by the Community Care (Direct Payments) Act, whereby local authorities can if they choose, make cash payments to some people in lieu of the community care services they have been assessed as needing. People would then be able to make and pay for their own support arrangements.

Any person aged 18–64 who has been assessed as needing support following a community care assessment would be eligible for direct payments. It is of course essential that the person is willing and able to manage direct payments. Leeds has just started a pilot scheme.

For further information ☎ **247 8682** voice and minicom.

## Disability Discrimination Act (DDA)

The Disability Discrimination Act is new legislation which makes it unlawful to discriminate against disabled people in connection with employment or the provision of goods, services and facilities. The Act will also, in time, set minimum access standards for taxis, buses and trains. The Act does not protect against all discrimination but if you feel you have been unfairly treated because of you are disabled you should seek advice.

The DDA Project provides detailed information and advice about any aspect of the Act. It can also help with challenging cases of discrimination including giving representation at Industrial Tribunals or in County Court. Contact the **DDA Project** on ☎ **269 5344** voice and minicom.

## Disability Living Allowance

👁 see **Benefits** pages 45–46.



## Disabled Facilities Grant

👁 see [Equipment \(Adaptations\)](#)

## Disabled Living Centre (DLC)

also known as [The William Merritt Disabled Living Centre](#)

The Centre provides free, impartial assessments, demonstration and advice on equipment and adaptations for disabled people. It also provides advice on how equipment can be obtained from health or social services or purchased/hired from retailers. There is also advice about children's equipment. They do not sell or hire the equipments. Telephone, or write for information. Visit by appointment for demonstrations, you don't have to be referred by anyone. Open days every month – telephone for details.

**The William Merritt Disabled Living Centre (DLC), St. Mary's Hospital,  
Green Hill Road, Leeds LS12 3QE ☎ 279 3140**

## Discrimination

👁 see also [Disability Discrimination Act \(DDA\)](#)

If you are treated less fairly or offered a lower standard of service on the grounds of race, gender, sexuality or disability this discrimination is recognised in law. Discrimination due to disability has been given legal recognition most recently. The Disability Discrimination Act (DDA) 1995 gives disabled people the opportunity to challenge discrimination.

👁 for further advice contact the [Citizens Advice Bureaux](#) – see pages 48–53



## Education (School Age)

The Leeds Education Authority has the task of seeing that children get any special education that they may need. The Special Services Division provides a range of support services to children and young people with special educational needs.

**Contact: Special Services Division, Blenheim Centre, Crowther Place, Leeds LS6 2ST ☎ 242 9111.**

These include:

**Parent Partnership Project** – organises and produces a range of educational advice and support services for parents. The project has produced an information pack and video: *‘Breaking Down the Barriers’*. Information pack £8, and video £17.

The Project has set up a parent-run helpline ☎ 247 6777 and ‘drop-in’ centre at the **Benefits Service, 2 Great George Street, Leeds LS2 8BA** which is open on *Tuesdays between 1.30 and 3.30pm.*

**Early Education Support Agency** – helps parents help their children to acquire skills in preparation for nursery and school. It also supports parents becoming involved in their local school. ☎ 292 4111.

The Education Authority uses a series of stages of help and finally a ‘Statement’ may be needed. This is a legal document that states what a child’s needs are and the provisions that need to be made. Children are ‘statemented’ if the education authority decides that a child’s educational needs can not be met in an ordinary school without extra resources.

There are a number of national organisations that can provide parents with independent advice on children’s education. Contact **D.I.A.L ☎ 268 2689** for details.

See also the *‘You Should Know’* series of leaflets – details in this booklet:

👁 see [Children](#)

## Electricity

Most electricity companies operate several services for disabled customers.

- The password scheme.
- Special arrangements for people with medical equipment using electricity.
- Repositioning your meter to a more suitable place.

If you require any further information from the YEB, contact the **Customer Liaison Officer** ☎ 0345 023045 or write to **Customer Services, Yorkshire Electricity, PO Box 89, Parry Lane, Bradford BD4 8TW.**

## Employment

👁 see also [Disability Discrimination Act](#)

### **PACT (the Placing, Assessment and Counselling Team of the Department of Employment)**

PACTs have been set up to help disabled people who want to find or keep work. They are staffed by Disability Employment Advisers who:

- Help disabled jobseekers who are at a disadvantage find suitable work or training
- Assist employers in recruiting disabled people and retaining people who become disabled
- Arrange local assessments of the employment capabilities of disabled people
- Offer practical support through the 'Access to Work' scheme

### **The Access to Work Scheme**

Is targeted towards disabled people who are already in employment or who have just found a job. They can help with funding for specialist equipment or adaptations, getting to work if unable to use public transport, employing a support worker or communicator.

Contact the **Access to Work Scheme** direct on ☎ 215 5286.

### **LEODIS (Leeds Employment Opportunities Disability)**

LEODIS co-ordinates a number of disability employment initiatives within Leeds City Council.

- **Supported Employment Scheme (SES)**
- **Disabled Jobseekers Service**



- **Skills and Employment/Development Project** – counselling, assessment, placement and support. **Contact LEODIS, 180 Chapeltown Road, Leeds LS7 4HT ☎ 214 5809/10** voice and minicom.

## Energy Efficiency

**The Energy Unit, Department of Housing, Leeds City Council ☎ 247 6362** gives energy advice to people in rented houses (both council and private) and to anyone on a low income.

**The Energy and Environmental Centre ☎ 0800 512012** provides advice to owner occupiers.

**Home Energy Efficiency Scheme (HEES)** can provide energy saving grants, and home assessments can be arranged for people on low income, in receipt of DLA or over 60. ☎ **0800 181667**.

## Equipment

👁 see [Disabled Living Centre, Family Fund, Occupational Therapists, Wheelchairs](#)

A range of equipment is available from Social Services and via your G.P. to help with daily living.

Advice and equipment can be provided to help with personal and domestic activities around the home.

👁 Contact the local [Social Services](#) office – see pages 56–57

If you have items which are no longer required and have been provided by Social Services or Leeds Health Authority they can be collected by **Leeds Equipment Service ☎ 247 7387**.

Nursing equipment can be provided on loan to help nurse people at home following recommendation by District Nurses, and for some items, hospital staff. Contact G.P./District Nurse.

Adaptations to the home for a disabled person can be recommended following assessment by an Occupational Therapist from Social Services. Larger adaptations such as stairlifts and showers, can be funded by Disabled Facilities Grants, which are means tested and the disabled person may have to pay for part or all of the cost of the adaptation. Further information from the local Social Services office, pages 56–57.

## Family Fund Trust (formerly The Rowntree Fund)

The fund gives grants to support families with disabled children under 16 with high support needs. It covers items such as laundry equipment, holidays, outings, driving lessons, bedding and clothing. Please apply in writing for further information to **The Family Fund, PO Box 50, York YO1 2ZX**.

## Family Placement

The Family Placement Scheme run by Social Services is a city wide service providing breaks for disabled people.

**Staying with a family** – this could be an occasional break, a regular break, or, if there is an emergency (for example when a carer has been taken into hospital).

**Home based service** – which provides a carer to stay within people's own homes, giving carers a break either for a few hours, a day, or overnight.

👁 Access to the service is via local [Social Services](#) office – see pages 56–57.

A small charge is made for this service. Please contact **Family Placement** workers 📞 **247 8659** or **247 8657**, or **Children Line 247 8656** for further information.



## Gardening

There are just a few schemes in Leeds that provide help with gardening. Many of them are only able to help people in specific age groups or areas of the city. Contact **D.I.A.L** ☎ **268 2689** for further details on services.

## Gas

The gas companies operate several services for disabled customers. These include:

- The password scheme
- Free gas safety checks
- Adaptors and special controls

More details from: **Gas Care** ☎ **0645 555 404**, OR write to:

**British Gas Home Energy, GasCare (M\C 93) Freepost BM8316, Wharf Lane, Solihull, West Midlands B91 2BR.**

## Grants for Groups of Disabled People

**Leeds Disabled People's Equality Committee** invites groups of disabled people to apply for development grants of up to £1000, or for funding to put on an event for International Day of Disabled People – up to £500. Starter grants of up to £50 are also available for new groups.

For details and application forms contact the **Client Unit, CB&R, 2nd Floor, Civic Hall Annexe, Leeds LS1 1UR** ☎ **247 7901**, minicom **247 4333**.

## Hard of Hearing

👁️ see [Deafness](#) or [Hearing Loss/Impairment](#)

## Hearing Aids

👁️ see [Hearing Loss](#) below

## Hearing Loss/Impairment

👁️ see also [Deafness](#)

Audiology Departments in hospitals do hearing tests – referral by your G.P. G.P.s can also do hearing tests at some surgeries.

The N.H.S. now has a wide range of hearing aids, and can provide batteries, repairs, medical examinations and follow-up appointments free of charge. There are also hearing aid clinics operating from many Health Centres throughout Leeds for checking and repairing hearing aids and supplying batteries etc. There are many private hearing aids available too, but these can be expensive.

👁️ for people who have lost their hearing see the [Leeds Centre for Deaf and Blind People](#), Centenary House – see the entry under [Deafness](#).

## Health Information (Healthbox)

👁️ see [N.H.S. Information Service](#)

## Holidays

Most holiday companies should be able to provide details of the accessibility of the accommodation at their resorts – in the UK and abroad.

Tourist Information Centres should also have information on accessible accommodation and sites of interest for their area.





Specialist information on topics such as holidays that provide care, outdoor activity holidays or equipment hire when abroad is available from national disability organisations such as:

**Holiday Care Service, 2nd Floor, Imperial Building, Victoria Road, Horley Surrey RH6 7PZ ☎ 01293 774 535**

or from **RADAR ☎ 0171 250 3222** who produce a range of directories and information booklets.

Locally **D.I.A.L ☎ 268 2689** can also provide information on a wide variety of holidays and associated services.

## Home Care

Can be provided by Social Services Department or by a number of private / voluntary organisations. The aim of the Social Services Home Care Service is to help people to stay living in their own homes by helping with personal care and some daily living tasks. Home care needs are usually assessed by a Home Care Manager from the local Social Services office. If the person is coming home from hospital they may need a lot of help for a short time. There is a sliding scale of charges.

👁 For more details and advice please contact the local [Social Services](#) office – see pages 56–57.

Private and voluntary organisations can be found in Yellow Pages, under *Nurses Agencies and Care Services*.

## Home Help

👁 see [Home Care](#) above

## Hospices

👁 see also [Nurses](#)

In addition to providing palliative care for people with a life threatening illness, hospices also provide care for people with advanced, degenerative, neurological conditions. Care is provided free of charge and referrals can be made by a G.P. or hospital.

**Serving West Leeds** [Wheatfields Hospice](#), Grove Road, Headingley, Leeds LS6 2AE ☎ 278 7249.

**Serving East Leeds** [St. Gemma's Hospice](#), Harrogate Road, Moortown, Leeds LS17 6QD ☎ 269 3231.

**Serving Yorkshire** [Martin House Hospice for Children](#), Grove Road, Clifford, Leeds LS23 6TX ☎ 01937 845045.

## Housing

**Housing Adaptations** 👁 see [Equipment](#)

**Medical Rehousing** if your present house is unsuitable because you are ill or disabled, contact the local authority housing office and ask for a medical priority application form. To apply you need to be registered either on the Council's Waiting or Transfer list.

## Housing Repairs and Grants

👁 see also [Equipment](#)

### Care & Repair

If you are over 60 and on a low income and own your own home, Care and Repair may be able to help, either with general advice about maintenance, with small repairs or with house renovation grant applications. They can also do home visits. They are a voluntary organisation.

**Care and Repair**, 323 Roundhay Road, Leeds LS8 4HT ☎ 240 6009.



## Incapacity Benefit

👁 see [Benefits](#) pages 45–46

## Income Support

👁 see [Benefits](#) pages 45–46

## Independent Living Fund

The Independent Living (1993) Fund offers financial support to pay towards your care. To get help from this fund you must be aged over 16 and under 66, and receive the highest care component of DLA. Social Services have to be providing a certain amount of weekly care before ILF (1993) will consider funding additional care.

👁 for further information contact the local [Social Services](#) office pages 56–57

## Invalid Care Allowance

👁 see [Benefits](#) pages 45–46

## Interpreting

👁 see [Sign Language](#)

## Learning Disability

👁 see [Sharing Care, Children, Advocacy](#). Also the local [Social Services](#) office pages 56–57

'*Through the Maze*' is a directory all about learning disability. A new edition is due out summer 1999. Available from Social Services and One-Stop services.

## LeedsCard

Offers a wide range of discounts on council services as well as dozens of shops, attractions and theatres. Disabled people who are receiving certain benefits and people who are registered blind are eligible for a Priority LeedsCard which is less expensive and offers bigger discounts.

For details contact the **LeedsCard** office ☎ **224 3636**

## Leeds Centre for Blind and Partially Sighted People

👁 see [Blindness](#)

**Shireview, 72 Headingley Lane, Leeds LS6 2DH ☎ 214 4544**

## Leeds Centre for Integrated Living

The new Leeds CIL will provide services developed by disabled people, for disabled people. It aims to assist disabled people in Leeds to take control of their own lives, to live where they want, how they want and with whom they choose. Services provided will include: a personal assistance/direct payments support service, housing and independent living support, peer support, advocacy, training and support for groups etc.

Contact directly: **Leeds CIL, Armley Grange Drive, Leeds LS12 3QH**

☎ **214 3599**, minicom **214 3598**.

e-mail: [acentre@equality.leeds.gov.uk](mailto:acentre@equality.leeds.gov.uk)

## Leeds Involvement Project

👁 see [Community Care](#)



## Legal Advice

Free legal advice is available via the [C.A.B.](#)  see pages 48–53, and at the **Law Centre, 263 Roundhay Road, Leeds LS8 4HS**  **249 1100.**


## Legislation

The services and support which disabled people are entitled to have been put in place by various Acts of Parliament. As far as Community Care law is concerned it is generally Social Services departments which are responsible for ensuring that these services are provided. The main relevant Acts are:

- **National Assistance Act 1948**
- **Chronically Sick and Disabled Persons Act 1970**
- **Disabled Persons (Services, Consultation and Representation) Act 1986**
- **National Health Service and Community Care Act 1990**
- **Carers (Recognition and Services) Act 1995**

In addition there are acts covering other aspects of people's lives, in particular relating to employment issues and access to services. The main one is:

- **Disability Discrimination Act 1995**

It is not possible to list the elements of all of the Acts here. If you wish to find out more about what they say (and your entitlement under them), contact **D.I.A.L**  **268 2689**

## Leisure

 see also [Sport, Leeds Card, Access \(Access Guide\)](#)

Information about groups and societies operating in Leeds may be obtained from Libraries, D.I.A.L, and Voluntary Action – Leeds.

## Libraries

👁 see also [Accessible Information](#)

As well as the book lending services, libraries have all kinds of information. The Central Library has a large collection for study and research.

All libraries have large print books and some have videos and CDs. Many libraries have a computer listing (LINX), of voluntary organisations, local societies, council services, etc.

**Books on Cassette** ☎ 214 3332.

**A home delivery service** for those unable to get to a library and without anyone to go for them. There is a waiting list. ☎ 214 3331.

**Mobile Libraries** for people unable to get to a branch library ☎ 214 3331.

**Braille and Large Print Services** Small items of printed material (e.g. letters, leaflets, even knitting patterns, etc.) can be transcribed into braille or large print or recorded onto tape. Your local library will be able to arrange this for you, or you can contact the **Braille and Large Print Unit, Leeds Centre for Blind and Partially Sighted People, Shireview, 72 Headingley Lane, Leeds LS6 2DH** ☎ 214 4540.

## Lipreading Classes

👁 see [Deafness](#)



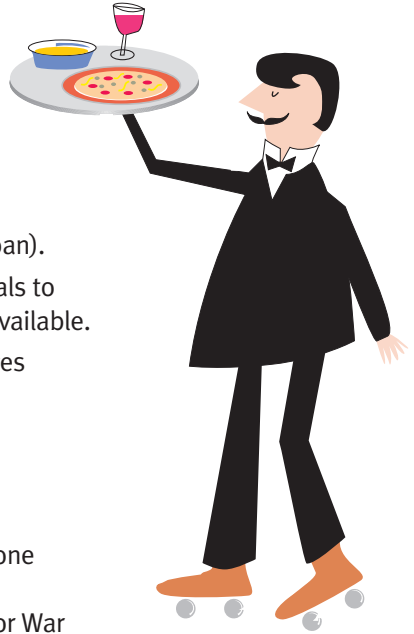
## Meals on Wheels

Social Services can arrange for a hot meal to be delivered to people who have difficulty in preparing food. In some areas, a supply of frozen meals, these just have to be heated up, can be delivered.

(A small freezer can also be provided on loan).

English, Asian, African-Caribbean, and meals to meet specialist dietary requirements are available.

👁️ contact local [Social Services](#) office pages 56–57



## Motability

👁️ see also [Cars](#)

Motability is a scheme through which anyone receiving the higher rate of the mobility component of Disability Living Allowance or War Pensioners' Mobility Supplement can lease or buy a car (or buy a powered wheelchair or scooter). Children from five years \* and non-drivers can apply for cars as passengers, provided they receive the correct allowance.

Most people get their car through a three-year lease system. Depending on the model chosen a one-off advance payment will be required but all servicing, routine maintenance and insurance costs are covered.

Financial help may be available through Motability's Charitable Fund and the Motability Equipment Fund for advance payments on lease vehicles, adaptations and in some instances driving lessons.

Contact the **Motability Helpline** ☎ **01279 635666** for further information.

\* *The limit is likely to change to three years later in 1999.*

## N.H.S. Health Information Service

A free phone service that gives information about health matters. Information available on conditions and diseases as well as details of local support groups, local specialists, complimentary medicine and waiting times. Information and advice can be posted out. ☎ **0800 66 55 44**.

## Nurses

**District Nurses** assess individuals in their own homes, health centres, or residential care homes, providing skilled nursing treatment, care, and support to patients and their carers. Contact via your G.P. or direct at the local surgery/health centre.

**Twilight District Nurse Service** provides skilled nursing care, treatment and support to patients and their carers within their own homes between the hours of 6.00pm and 10.00pm. Contact via your G.P.

**Health Visitors** are mainly concerned with preventing ill health and promoting good health, and are based in health centres and clinics. They make home visits.

**Macmillan Nurses** are specialists in cancer care, and other life-threatening diseases. They offer advice on: treatments, pain and symptom management and give psychological support. They are contactable at:

**Wheatfields** ☎ **278 7249**, **St. Gemma's** ☎ **269 3231**,

**St. James's Hospital** ☎ **243 3144 ext 64563**.

**Marie Curie Nurses** aim to help and support patients with advanced cancer being nursed in the community, and provide support and respite for carers. Contact via the **Nurse Manager, Leaffield Clinic** ☎ **295 1720**.

**Night Care Nursing** provides treatment and support for patients and their carers within their own home during the night.

Contact via the **Nurse Manager, Leaffield Clinic** ☎ **295 1720**.

## Nursing Homes

👁 see [Residential Care](#)



## Occupational Therapists

**Social Services Department & Hospitals Social Service O.T.s** provide an assessment and advisory service for people who have long term disability or illness. The service offers a wide range of resources including various types of equipment and adaptations within the home, to help with activities such as climbing stairs, eating meals, using the toilet, bathing and carrying out kitchen tasks.

• for more information contact your nearest **Social Services** office pages 56–57

**Hospital OTs** provide rehabilitation for patients who are in hospital, they also assess patients at home before they are discharged and provide equipment if it is needed. They will refer patients to Social Services if adaptations or larger pieces of equipment are needed.

## Orange Badges

• see **Parking**

The Orange Badge Parking Scheme is a national scheme of parking concessions for disabled drivers or passengers. Eligibility is based on considerable (and long term) difficulty in walking or turning a steering wheel by hand. A person has automatic entitlement to an Orange Badge if they are:

- Registered blind
- Receive the higher rate of DLA Mobility
- Receive a War Pensioners Mobility Supplement
- Have a vehicle supplied by DSS/DoH
- Have received a Government Grant towards purchase of a vehicle

Applications for Orange Badges cost £2.

• contact your nearest **Social Services** office pages 56–57

## PACT

👁 see [Employment](#)

## Parking (car parking)

👁 see [Orange Badges](#)

Within Leeds city centre there are a number of specific bays where Orange Badge holders can park for up to 4 hours. A map of these parking bays is available from the **Highways Department, Parking Services** ☎ 247 4140, minicom 247 7500.

Orange Badge holders can park free all day in any Pay and Display bay or within any off street car park owned by the Council. Most commercial/private car parks charge all users.

## Peer Support

The Peer Support Service is a confidential service provided by volunteer disabled people, for disabled people who want to talk about issues concerning their lives. Sessions take place at **Leeds Centre for Integrated Living**.

This is a confidential service with a different phone number:

☎ 289 0637, minicom 214 3599.

This service is free for disabled people with physical impairments living in Leeds.

## Pendant Alarms

👁 see [Alarms](#)

## Pensions/Benefits

👁 see [Benefits](#) pages 45–46

## Physiotherapy

The Community Physiotherapy service offers treatment and advice to patients and their carers in their own homes or residential accommodation.

Referral via a G.P. or consultant.



## Rail Travel

👁 see also [Bus and Rail Passes](#)

For Rail information ☎ **0345 484950**. Calls charged at local rate

## Rehabilitation

**Young Adult Team** offers a service to young physically disabled people aged 16 to 25. They provide therapy, advice and support to enable people to achieve their maximum potential and assume more control over their health and social care. They are based at:

**St. Mary's Hospital, Green Hill Road, Leeds LS12 3QE** ☎ **279 0121**

## Residential Care

People may be unable to live at home even with help or they may prefer to live with others in some form of residential care. Nursing Homes provide more medical/nursing attention. The '*Directory of Care Homes in Leeds – Making the Right Choice*' lists all the approved homes in Leeds. It is updated each year. It is available from Social Services Offices, in Libraries and from some G.P.s.

👁 see lists of [Social Services](#) offices on pages 56–57

## Resource Centres

Disabled people can attend a centre to socialise, learn new skills/hobbies, or to get advice and support. Transport can be provided if necessary. Informal visits to each of the centres can be arranged for potential users, carers, family or community groups. There are three Resource Centres in Leeds plus the Leeds Centre for Integrated Living (which used to be Armley Resource Centre)

**Clifford Brooke Resource Centre** 79 Roundhay Road, Leeds LS7 ☎ **247 7351/3**.

**Mariners Resource Centre** Hunslet Hall Road, Leeds LS11 ☎ **246 8982**.

**Osmondthorpe Resource Centre** Osmondthorpe Lane, Leeds LS9 ☎ **249 2676**.

If you want to know more contact one of the centres directly.

👁 or contact the local [Social Services](#) office pages 56–57

## Respite Care

👁 see also [Residential Care](#) and [Family Placement](#) and [Hospices](#)

'Respite care' means giving a break to someone usually looked after in their own home. It may be a short stay in a residential or nursing care home or somewhere else, for example Family Placement. This can be part of a regular programme or as a one-off. A charge is usually made for respite care. Initial enquiries should be made either to the local [Social Services](#) office (👁 see list on pages 56–57) or to the hospital Social Work Dept. if you are leaving hospital. **Crossroads** is a service for carers in Leeds 10 , 11, 26 and 27, offering regular short breaks provided by trained care attendants in the home. Contact **Crossroads, Stringer House, 34 Lupton Street, Leeds LS10 2QW** ☎ 271 6457.

## Road tax exemption

People receiving DLA at the higher rate may be eligible. Contact D.I.A.L for further advice.

👁 see also [Cars](#)

## Rowntree Fund

👁 see [Family Fund Trust](#)

## Rubbish Collection

If you have a 'wheelie bin', there is a wheel-out service for people who are unable to move it themselves. Large items can also be taken away.

☎ 247 7477, minicom 247 8546. Removal of medical waste can be arranged by G.P.s or District Nurses.



## Severe Disablement Allowance

👁 see [Benefits](#) pages 45–46

## Sharing Care

A voluntary organisation working with volunteers and people with learning disabilities 📞 **247 0411**

## Shopmobility

Loans wheelchairs (manual and electric) and scooters to people for use in the city centre. The service is free but you need to register first. You will be asked for proof of identity.

In the city centre: **Shopmobility, 61 Vicar Lane (opposite the Markets)**

📞 **246 0125** voice and minicom.

**The White Rose Centre** also offers a loan service. 📞 **277 3638**.

## Sign Language

👁 see also [Deafness](#)

**Sign language interpreters** are available to interpret in a wide variety of situations. This service is free to Deaf people, organisations booking interpreters will be charged.

**Leeds Sign Language Interpreting Service, Centenary House, North Street, Leeds LS2 8AY** 📞 **246 9990**, minicom **243 9900**.

**Sign Language Classes** The Education Department's Deaf Start (formerly called Total Communication Unit) organises day and evening classes in British Sign Language throughout the city, to suit beginners and those aiming for their Stage 1 and Stage 2 C.A.C.D.P. certificates.

**DEAFSTART at Blenheim Centre, Crowther Place, Leeds LS6 2SP**

📞 **242 9111 ext 222**, minicom **243 8186**.

## Sight Loss

👁 see [Blindness](#)

## Social Security

👁 see [Benefits](#) pages 45–46

## Social Services

- see list of local offices at the back of this booklet pages 56–57

## Sport

Leeds Sports Development produces a guide which gives detailed information about all the sports especially for disabled people in Leeds. It includes entries on sports such as sailing, boccia, wheelchair basketball, new image rugby and aerobics, although there are disabled people enjoying every sport going!

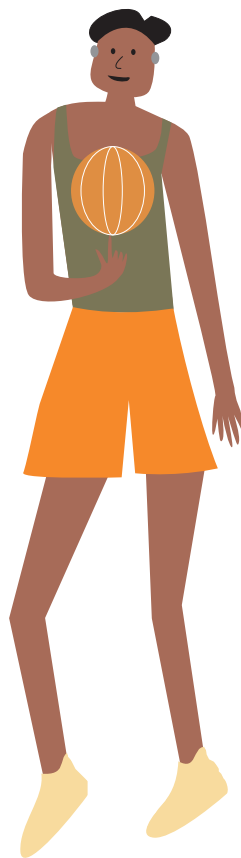
For more details of organised sports, contact:  
**The Disability Sports Development Officer,**  
**South Leeds Stadium, Middleton Grove,**  
**Leeds LS11 5DJ** ☎ **276 2824**, minicom **272 3074**,  
to join their mailing list and get the newsletter  
and other information.

## Stroke Association Information Centre

Open Monday–Friday 9am–2pm  
**Seacroft Hospital, York Road, Leeds LS14 6UH**  
☎ **260 1167**.

## Support Groups

- see [D.I.A.L., Voluntary Organisations](#) and the [Community Health Council's](#) booklet – ‘*Health Related Self-Help Groups in Leeds*’
- see [Community Health Council](#)





## Taxis

There are three firms in the city with wheelchair accessible taxis. Advance booking is advisable.

**Telecabs** ☎ 279 2222

**City Cabs** ☎ 246 9999

**Streamline** ☎ 244 3322

## Telephones

👁 see also [Alarms](#)

The Social Services Department can under some circumstances assist with the costs of reconnection or installation of a telephone, and/or the rental charges. To qualify you must live alone, be unable to get out and need a telephone in a medical emergency. There are medical and financial criteria and each case is considered separately.

👁 Contact the local [Social Services](#) office pages 56–57 for further advice and information.

## Toilets (Public)

The National Key Scheme (NKS), RADAR applies to most toilets for disabled people which are kept locked. A number of toilets in and around Leeds have been fitted with NKS locks. Lists and keys are available for a charge, (currently £2) from the local [Social Services](#) office.

👁 see pages 56–57

## Training

👁 see [Employment](#)

## Transport

👁 see [AccessBus](#), [Buses](#), [Rail Travel](#), [Motability](#), [Cars](#).

## VAT – Zero Rate

Relief from VAT payment is available on certain goods and services that are purchased by a disabled person for their needs. Examples of goods that can be zero rated include wheelchairs, and equipment such as stairlifts, hoists and adjustable beds. Examples of services that can be zero rated include the constructing of ramps or widening of doors within a house, or the installing of a ground floor bathroom or toilet.

More information is available from **VAT Advice Centre** ☎ 0191 201 1719 which also deals with specific enquiries.

## Visual Impairment

👁 see [Blindness](#), and [Accessible Information](#)

## Voluntary Organisations/Voluntary Action – Leeds

There are many voluntary organisations in Leeds. There are Voluntary Resource Co-ordinators in some Social services offices. 👁 see pages 56–57.

For more information contact: **Voluntary Action – Leeds, Stringer House, Lupton Street, Hunslet, Leeds LS10 2QW** ☎ 270 0777.



## Welfare Rights Unit

The Welfare Rights Unit is part of Leeds City Council's Department of Community Benefits and Rights. It offers free, impartial and confidential advice and support on welfare benefits and rights issues. Advice surgeries are held daily and home visits are available for those who may find it difficult to get to a surgery. ☎ **247 6013**, voice and minicom )

*Mon to Thurs 8.30am–5.00pm., Fri 9.30am–4.30pm.*

## Wheelchairs

👁 see also [Equipment](#) and [Motability](#)

If a wheelchair is needed on a long term basis G.P.s can refer you to the Wheelchair Centre at Chapel Allerton Hospital. At the Centre you can be assessed for the most suitable wheelchair from the N.H.S. range. The Wheelchair Voucher Scheme allows people to add their own money to pay for a better wheelchair. Free ambulance transport can be provided to and from the Wheelchair Centre.

For buying your own wheelchair, independent advice may be useful and the **William Merritt Disabled Living Centre** provides this. ☎ **279 3140** to make an appointment.

For short term use (less than 12 weeks) or on a very temporary basis (a few days) again speak to your G.P. but ask to be referred to the Leeds Equipment Service.

👁 see [Equipment](#)

Wheelchairs are now available in some big supermarkets and you can borrow an electric scooter from [Shopmobility](#) (👁 see entry) if shopping in the city centre. There are also a number of places in and around Leeds that have wheelchairs for loan, including tourist sites. Contact **D.I.A.L** ☎ **268 2689** for more details.

## The William Merritt Disabled Living Centre

👁 see [Disabled Living Centre](#)

## Work

👁 see [Employment](#)

## WWW – the World Wide Web

The Internet has masses of information from all over the world, but local information is also available. Leeds City Council has its own site which is holding an increasing amount of information about council services and information about voluntary organisations.

The Internet address is: **<http://www.leeds.gov.uk>**



## Young Adult Team

👁 see Rehabilitation



## Benefits

There are a range of social security benefits associated with disabled people. These are administered by the Benefits Agency (formerly known as the DSS or DHSS). Contact the local Benefits Agency Office listed on page 47. The Benefits Agency produce leaflets on all the benefits listed below.

There are time limits within which to apply for these benefits so applications need to be made ASAP. For confidential and independent advice on all social security benefits contact the organisations listed in this booklet under [Advice and Information](#).

### ***Attendance Allowance***

For people 65 and over who need a lot of help with personal care (help with activities such as getting up, getting dressed, eating or cannot be left on their own safely).

### ***Council Tax Benefit***

For people on low incomes to help pay their Council Tax. Disabled people may be entitled to extra Council Tax Benefit.

### ***Disability Living Allowance***

A benefit for people who are under 65 who either need some help with personal care (help with activities such as getting up, getting dressed, eating or cannot be left on their own safely) or have a lot of difficulty with getting around.

### ***Disability Working Allowance***

Paid to disabled people who are in work but are on a low income.

### ***Health Benefits***

People who are on low incomes may be entitled to help with some or all the costs of N.H.S. dental treatment, prescription charges, eye tests, and fares to hospital.



## BENEFITS

### ***Housing Benefit***

Paid to people on low incomes to help pay their rent. Disabled people may be entitled to extra Housing Benefit.

### ***Income Support***

This is paid to people who are on low incomes. Disabled people and carers with less than £8000 may be entitled to extra Income Support.

### ***Incapacity Benefit***

Paid to disabled people who are thought by the Benefits Agency to be unable to work. People need to have paid enough NI contributions to qualify.

### ***Invalid Care Allowance***

This is paid to people aged 16–65 who are spending at least 35 hours a week caring for a severely disabled person who is in receipt of the middle or highest rate of Disability Living Allowance care component of the Attendance Allowance.

### ***Job Seekers Allowance***

Paid to people who are unemployed and are actively seeking work.

### ***Severe Disablement Allowance***

Paid to disabled people who are thought by the Benefits Agency to be unable to work.

### ***Social Fund***

Loans or grants to help with the cost of large or exceptional expenses. Certain types of grants are aimed at disabled people. Only for people on Income Support.



## BENEFIT AGENCY OFFICES

Office	Postal Address	☎	Areas Covered
Leeds East 529 York Road Southern House Leeds LS9 6TF	DSS (Leeds East) Department 12 Wakefield WF90 1BQ	285 0000	Leeds 9, 14, 15, 22, Aberford, Bardsey, Barwick, Boston Spa, Bramham, Clifford, Collingham, Garforth, Great & Little Preston, Ledsham, Ledstone, Lotherton, Mickfield, Scarcroft, Scholes, Stourton Grange, Swillington, Thorne, Thorpe Arch, Walton, Wetherby, Kippax, Allerton Bywater, & East Keswick
Leeds North Hume House Tower House Street Leeds LS2 8NT	DSS (Leeds North) Department 11 Wakefield WF90 1BQ	214 8300	Leeds 2, 7, 8, 16 (except Bramhope), 17, Eccup & Harewood
Leeds West Century House Church Lane Pudsey Leeds LS28 7RQ	DSS (Leeds West) Department 9 Wakefield WF90 1BQ	205 8800	Leeds 12, 13, 18, 28, Horsforth, Pudsey, Stanningley, Bramley, Calverley, Farsley & Rodley
Leeds North West 21/22 Park Place Leeds LS1 2SL	DSS (Leeds North West) Department 10 Wakefield WF90 1BQ	214 8000	Leeds 1, 3, 4, 5, 6, 10, 11, 19, 21, 27, WF3, Arthington, Bramhope, Carlton, Guiseley, Hawksworth Village, High Royds, Otley, Poole, Rawdon, Yeadon, Churwell, Drighlington, East & West Ardsley, Gildersome, Morley, Rothwell, Tingley, Methley, Mickleton, Cottingley Springs Caravan Park.

**All telephone enquiries for under pension age Income Support should be made to the Park Place office on 214 8000. Personal callers should use their local office.**



**CITIZENS ADVICE BUREAUX · C.A.B.s**

accessible to people with mobility difficulties 

**Address**


**Times**

For information, advice, advocacy and representation.

Telephone advice is available from some C.A.B. offices, the service is popular so these are busy lines.

Some of the main offices are open most days, but a number of smaller centres open for only a few hours each week:

**CITY CENTRE**

Westminster Buildings  
31 New York Street, Leeds LS2 7DT  
 245 7679

Monday 9.30 – 3.30  
Tuesday 9.30 – 6.30  
Wednesday 9.30 – 3.30  
Thursday closed  
Friday 9.30 – 3.30



**ARMLEY (DROP-IN)**

Strawberry Lane Centre  
Strawberry Lane, Leeds LS12 1SF

Tuesday 9.30 – 12.00  
Wednesday 9.30 – 12.00  
Thursday 1.00 – 3.00



**BEESTON**

Hunslet Hall Social Services  
Disraeli Terrace, Leeds LS11 6UA

Monday 10.00 – 12.00  
Wednesday 1.30 – 3.30

**BRAMLEY**

Bramley Community Centre  
Waterloo Lane, Bramley

Tuesday 10.00 – 1.00  
Thursday 1.00 – 4.00

**BRIDGESIDE**

Only for people affected by HIV/AIDs  
50 Call Lane, Leeds LS1 6DT

Thursday 1.00 – 3.00

**BURLEY LODGE**

Burley Lodge Centre  
12 Burley Lodge Road, Leeds LS6 1QP

Tuesday 1.00 – 4.00  
Wednesday 9.30 – 11.30 women only  
Friday 10.00 – 12.00

**CITIZENS ADVICE BUREAUX · C.A.B.s**accessible to people with mobility difficulties **Address****Times****CROSSGATES** 

Methodist Schoolroom  
Austhorpe Road  
Crossgates, Leeds LS15 8BA

Monday 10.00 – 2.00  
Wednesday 10.00 – 2.00  
Friday 10.00 – 12.30

**GARFORTH**

Welfare Hall, Main Street  
Garforth LS25 1AP

Monday 9.30 – 12.00  
Thursday 1.00 – 3.30

**GIPTON/HAREHILLS** 

Compton Road Library  
Leeds LS9 7BG

Tuesday 10.00 – 12.00  
1.30 – 3.30 housing only

Harehills Primary School  
Darfield Road, Leeds LS8 5DQ  
(term-time only)

Wednesday 9.30 – 11.30 women only

**MICKLEFIELD** 

The Fire Station  
Great North Road, Leeds LS25 4AF

Tuesday 1.00 – 3.30

**MIDDLETON** 

Middleton Family Advice Centre  
Middleton Park Avenue, Leeds LS10

Tuesday 10.00 – 12.00  
Friday (housing advice) 10.00 – 12.00

**MORLEY** 

Town Hall, Queen Street  
Morley LS27 9DY

Monday 10.30 – 12.30  
Wednesday 12.30 – 2.30  
Friday 10.30 – 12.30

**PUDSEY** 

Trinity Chapel  
Wesley Square, Lowtown  
Pudsey LS28 8BN

Monday 10.00 – 3.00  
Tuesday 10.00 – 3.00  
Friday 10.00 – 3.00



**CITIZENS ADVICE BUREAUX · C.A.B.s**

accessible to people with mobility difficulties 

**Address**

**Times**

**RICHMOND HILL**

Richmond Hill Community Centre  
Long Close Lane, Leeds LS9 8NP

Tuesday 10.00 – 12.30  
Thursday 1.00 – 3.00



**SEACROFT CLINIC**

Seacroft Avenue, Leeds LS14 6JD

Monday 9.30 – 11.30




**STANKS/SWARCLIFFE** (term-time only)

St Gregory's Youth &  
Adult Education Centre  
Stanks Gardens, Leeds LS14 5LS

Wednesday 1.30 – 3.30

**CHAPELTOWN C.A.B.**


**CHAPELTOWN**

Willow House  
New Roscoe Buildings  
Cross Francis Street, Leeds LS7 4BZ  
 262 9479

\*Monday 9.00 – 3.30  
Tuesday 9.30 – 12.00  
Wednesday 9.30 – 12.00  
Thursday 9.30 – 12.00  
\*Friday 9.30 – 3.30  
\*closed 12.00 – 1.00




**CHAPELTOWN COMMUNITY CENTRE**

Reginald Terrace, Leeds LS7 3EY  
 262 6816

Tuesday 9.30 – 12.00 & 1.00 – 3.30  
Thursday 9.30 – 12.00 & 1.00 – 3.30




**PRINCE PHILLIP CENTRE**

Scott Hall Avenue  
Leeds LS7 2HJ  
 262 3393

Monday & Friday  
9.30 – 12.00 & 1.00 – 3.30



**LEAFIELD CLINIC**

Leafield Clinic, 109 King Lane  
Leeds LS17 5BP  
 268 7001

Wednesday 9.00 – 12.00  
Friday 9.00 – 12.00



**CITIZENS ADVICE BUREAUX · C.A.B.s**accessible to people with mobility difficulties **Address****Times****OTLEY C.A.B.****OTLEY**

The Old Magistrates' Courts  
Courthouse Street, Otley LS21 1BG  
☎ 01943 466976

Monday 9.30 – 3.30  
Tuesday 9.30 – 3.30  
Wednesday 9.30 – 3.30  
Thursday 9.30 – 3.30  
Friday 9.30 – 12.30

**YEADON**

South View Community Centre  
Off Flanshaw Crescent, Yeadon LS19

Thursday 10.00 – 12.00

**BURLEY IN WHARFEDALE**

Parish Office, Station Road  
Burley in Wharfedale

Tuesday 9.30 – 12.00

**FREE INTERVIEWS WITH SOLICITORS (by appointment only)****CITY CENTRE**

Tuesdays 4.00 – 6.00  
Wednesdays 12.00 – 2.00

**CROSSGATES**

Every Other Wednesday 12.00 – 1.00

**CHAPELTOWN**

Wednesdays 7.00 – 8.30  
temporarily suspended

**OTLEY**

Every other Thursday 5.30 – 6.30

**PUDSEY**

Tuesdays 6.00 – 7.00



**CITIZENS ADVICE BUREAUX · C.A.B.s**

accessible to people with mobility difficulties 

**Address**

**Times**

**FREE INTERVIEWS WITH ACCOUNTANTS**

**CITY CENTRE**

Tuesdays 5.30 – 6.30

**PUDSEY**

By arrangement

**LANGUAGES**

**CHAPELTOWN**

Asian languages

**BURLEY LODGE**

Urdu, Punjabi

**BEESTON**

(Wednesdays) Urdu, Punjabi, Bengali, Sylheti

**HAREHILLS PRIMARY SCHOOL**

Urdu, Punjabi

**ADDITIONAL SERVICES**

**TRAVELLERS ADVICE**

 232 6035

**ADVICE SESSIONS AT MENTAL HEALTH SERVICES**

Interviews by appointment only

If you are unable to travel to a bureau, then ring or write to arrange a home visit

**BLACK MENTAL HEALTH RESOURCE CENTRE**

Jamaica House

(monthly) Thursday 10.00 – 12.00

277 Chapeltown Road, Leeds LS7 3HA

**HIGH ROYDS HOSPITAL**

Bradford Road, Menston

Tuesday 1.00 – 4.00

Ilkley LS29 6AQ

accessible to people with mobility difficulties **Address****Times****HUNSLET – THE VALE**Pottery Vale  
Church Street, Hunslet, Leeds 10

Tuesday 1.00 – 3.00

**MALHAM HOUSE DAY HOSPITAL**

25 Hyde Terrace, Leeds LS2 9LN

Monday 11.00 – 1.00

**ST JAMES'S HOSPITAL**Roundhay Wing  
Beckett Street, Leeds LS9 7TF

Monday 10.00 – 1.00

Wednesday 1.30 – 3.30

**ST MARY'S HOSPITAL**Resource Centre  
Green Hill Road, Leeds LS12 3QE

Thursday 2.00 – 4.00

**TOUCHSTONE DROP-IN**2 –4 Middleton Crescent  
Leeds LS11 6JS

Monday 1.30 – 3.30

**ROUNDHAY ROAD DAY CENTRE**

79 Roundhay Road, Leeds LS7 4AA

Monday 1.30 – 12.00

**STOCKS HILLS DAY CENTRE**

Chapel Lane, Leeds LS12 2AP

Monday 10.00 – 12.00



**WELFARE RIGHTS ADVICE SURGERIES**

**Address**

**Times**

**MAIN OFFICE**

**ADVICE & BENEFITS SERVICE**

Dept. of Community Benefits & Rights  
Leeds City Council, Selectapost 29  
2 Great George Street, Leeds LS2 8BA  
☎ 247 6013

Office Hours:  
Monday to Thursday 8.30 – 5.00  
Friday 9.30 – 4.30

**ADVICE SURGERIES**

**LITTLE LONDON COMMUNITY CENTRE**

Oatland Lane, Leeds LS7 1SP  
☎ 244 3498

Thursday & Friday 10.00 – 12.30

**HENRY BARRAN CENTRE**

Amberton Grove, Leeds LS8 3JR  
☎ 232 3925

Monday, Wednesday & Friday  
10.00 – 12.30

**BELLE ISLE CLINIC**

2 Aberfield Gate, Leeds LS10

Wednesday 10.00 – 12.30

**BELLE ISLE NEIGHBOURHOOD CENTRE**

92 Windmill Road, Leeds LS10 3HJ  
☎ 214 1740

Monday, Tuesday, Thursday &  
Friday 1.00 – 12.30

**OSMONDTHORPE ONE STOP SERVICES**

81a Wykebeck Mount, Leeds LS9  
☎ 2477 677

Thursday 10.00 – 12.30

**BRUDENELL CENTRE**

Welton Road, Leeds LS6  
☎ 230 7715

Monday 1.30 – 4.00  
Friday 1.30 – 3.30

**ALLERTON BYWATER YOUTH & ADULT CENTRE**

Leeds Road, Allerton Bywater WF10 2DP  
☎ (01977) 604193

Thursday 1.00 – 3.00

**WELFARE RIGHTS ADVICE SURGERIES**

Address	Times
<b>BANGLADESHI COMMUNITY TRAINING BASE</b> Roundhay Road, Leeds LS8 4AD ☎ 235 0948	Monday & Wednesday 10.00 – 12.30
<b>LINCOLN GREEN LINK-UP CENTRE</b> Lincoln Green Shopping Centre, Leeds LS9 7NP ☎ 235 9372	Wednesday 10.00 – 12.30
<b>PAKISTANI CENTRE</b> Conway Road, Leeds LS8 ☎ 235 0988	Friday 10.00 – 12.30
<b>ADVICE &amp; BENEFITS SERVICE</b> Selectapost 29, 2 Great George Street, Leeds LS2 8BA ☎ 247 6013	by appointment only Tuesday 9.00 – 4.00
<b>SOUTH LEEDS ELDERLY ACTION GROUP</b> 73 Lodge Lane, Leeds LS11 ☎ 277 6404	Wednesday 10.00 – 12.30
<b>SOUTH SEACROFT ONE STOP SERVICES</b> 91–95 Moresdale Lane, Leeds LS14 6GG ☎ 247 5892	Monday, Wednesday, Friday 10.00 – 12.30
<b>SIKH TEMPLE</b> 78 Lady Pit Lane, Leeds LS11 ☎ 270 3361	Tuesday & Thursday 9.00 – 12.00 & 1.00 – 4.00
<b>HALTON MOOR HOUSING OFFICE</b> 67/69 Ullswater Crescent, Leeds LS15 0BW ☎ 260 6538	Tuesday & Friday 1.30 – 3.30
<b>WOODHOUSE ADVICE CENTRE</b> Charing Cross Shopping Centre, Leeds LS6 2PY ☎ 247 6013	Monday 1.30 – 3.30



**SOCIAL SERVICES OFFICES**

<b>Area Office</b>		<b>Address</b>
<b>ARMLEY/WORTLEY</b>	214 3500	Redcourt, Church Road, Leeds LS12 1TY
<b>BELLE ISLE/ABERFIELD</b>	214 1759	Aberfield Centre, Leeds LS10 3QH
<b>BRAMLEY</b>	214 3500	2 Westover Road, Leeds LS13 3PG
<b>BUCKINGHAM HOUSE</b>	278 7341	41 Headingley Lane, Leeds LS6 1BL
<b>CROSSGATES &amp; GARFORTH</b>	247 7677	(Please contact the Osmondthorpe One Stop Service)
<b>HUNSLET HALL</b>	214 1600	Disraeli Terrace, Leeds LS11 6UA
<b>MIDDLETON</b>	214 1715	2 Acre Road, Leeds LS10 4LF
<b>MORLEY</b>	247 7124	Morley Town Hall, Leeds LS27 9DY
<b>OSMONDTHORPE ONE STOP SERVICES</b>	247 7677	81a Wykebeck Mount, Leeds LS9 ODW (for all initial enquiries in the area)
<b>OTLEY</b>	247 7712	8 Boroughgate, Otley, Leeds LS21 3AH
<b>PUDSEY</b>	247 7794	Pudsey Town Hall, Robin Lane LS28 7BN
<b>RAWDON</b>	247 7601	Micklefield House, New Road Side LS19 6DF
<b>ROTHWELL</b>	247 7677	(Please contact Osmondthorpe One Stop Services)
<b>ROUNDHAY</b>	249 5787	79 Roundhay Road, Leeds LS7 4AA

**SOCIAL SERVICES OFFICES**

<b>Area Office</b>	<b>☎</b>	<b>Address</b>
<b>SEACROFT</b>		(Please contact South Seacroft One Stop Centre)
<b>SOUTH SEACROFT ONE STOP CENTRE</b>	247 5015	91–95 Moresdale Lane, Leeds LS14 6GG (for all initial enquiries in the area)
<b>STANNINGLEY</b>	214 6060	10 Gladstone Terrace, Leeds LS28 6NE
<b>WEST PARK</b>	274 9492	West Park Centre, Spenn Lane, Leeds LS16 5BE
<b>WETHERBY</b>	01937 582706	Council Offices, 24 Westgate, Wetherby LS22 6NL
<b>YORK TOWERS</b>	214 3400	383 York Road, Leeds LS9 6TA
<b>LEEDS GEN INFIRMARY</b>	392 6851	Social Services 'B' Floor, Main Site, Great George St, LS1 3EX
<b>ST JAMES'S HOSPITAL</b>	206 4391	Medical Social Work Dept, Beckett Street LS9 7TF
<b>HIGH ROYDS HOSPITAL</b>	01943 876151	Menston, Ilkley, Leeds LS29 6AQ
<b>EMERGENCY SOCIAL WORK TEAM</b>	269 6198	(Out of hours social work emergencies)
<b>SOCIAL SERVICES HEAD OFFICE</b>	247 8630 minicom 247 8629	Merrion House, 110 Merrion Centre, Leeds LS2 8QB



## N.H.S. HOSPITAL SERVICES

### LEEDS TEACHING HOSPITALS N.H.S. TRUST (L.T.H.T.)

Trust Headquarters, St James's University Hospital, Beckett Street,  
Leeds LS9 7TF ☎ 243 3144

The new Trust is made up of the following hospitals:

- The General Infirmary at Leeds (L.G.I.)  
(inc. the Clarendon Wing) ☎ 243 2799
- Cookridge Hospital ☎ 267 3411
- Chapel Allerton Hospital ☎ 262 3404
- Leeds Dental Hospital ☎ 244 0111
- Wharfedale General Hospital ☎ 01943 465 522
- Leeds Chest Clinic ☎ 295 1100
- St James's University Hospital ☎ 243 3144
- Seacroft Hospital ☎ 264 8164

See the local telephone directory under Health Services in Leeds for phone numbers of individual departments.

### ACCIDENTS AND EMERGENCIES

There are Accident and Emergency departments at:

- Leeds General Infirmary Telephone enquiries ☎ 292 2512  
Advice Line ☎ 292 2503
- St James's University Hospital ☎ 283 6915
- There is a Minor Injuries Unit at  
Wharfedale General Hospital ☎ 292 3177



## LEEDS COMMUNITY AND MENTAL HEALTH SERVICES TEACHING N.H.S. TRUST (C.M.H.)

**Trust Headquarters, The Mansion, Meanwood Park Hospital, Tongue Lane, Leeds LS6 4QB ☎ 275 8721**

CMH is responsible for providing health services in local clinics and hospitals, through G.P. surgeries, in schools and in people's homes. The services it provides includes:

**community nursing**

**dental services**

**nutrition and dietetics**

**physiotherapy**

**podiatry (chiroprody)**

**specialist services for people with mental health problems or learning disabilities.**

For most of these services you should contact your G.P. in the first instance. He or she will refer you to the appropriate service. You can make an appointment directly at the clinic for some services.

Information about healthy living and lifestyles is available at local health clinics. See the local telephone directory under *Health Services in Leeds* for a list of clinics.



## PUBLICATIONS

# Publications

### *You Should Know*

Including a Catalogue, Parents Guide and a series of Factsheets with information about children with special needs, has been written to help parents in Leeds get up-to-date information, from each other as well as from the official services. It should be available from health, social services or education services, or telephone 247 8136.

### *The Leeds Mental Health Directory (1997)*

Covers all aspects of mental health provision. There is a charge of £2 for individuals, although it is free to anyone who is in receipt of benefits.

Available from: Leeds MIND, Grove Villa, 82 Cardigan Road, Leeds LS6 3JB  
☎ 230 7608.

### *Living with Dementia (new edition published Oct 1998)*

Covers all aspects of Dementia. Free from the Alzheimer's Disease Society, Armley Grange, Armley Grange Drive, Leeds LS12 3QH. ☎ 231 1727.

### *A-Z of Services for Older People (1998)*

Directory listing the services available to people living in the Leeds area. Free from Leeds Social Services, available in small, standard (A4 size) and Large Print sizes. From local SSD offices (👁 see pages 56–57) or contact Merrion House ☎ 247 8924.

Large Print available from Leeds Centre for Blind and Partially Sighted People. Shireview, 72, Headingley Lane, Leeds LS6 2DH ☎ 214 4540.

### *Care Homes in Leeds – Making The Right Choice (1998/9)*

A Listing of residential and nursing homes in Leeds.

Free from Social Services as above.

### *A Practical Guide for Disabled People (1996)*

A national directory free from Social Services Inspectorate: SSI Distribution Centre, PO Box 410, Wetherby, LS23 7LN.



**PUBLICATIONS**

***The Leeds Access Guide***

A new guide very recently published. (Also on CD-Rom and Internet)  
Available free to disabled people living in Leeds, from The Equal Opportunities Unit, Civic Hall, Leeds ☎ 247 4769, minicom 224 3589.

***Information for Blind and Partially Sighted People***

This directory is also available in large print, tape and Braille (for Registered Blind and Partially Sighted only). Free from the Development Section at Leeds Social Services, ☎ 247 8593.

***Through the Maze (1999)***

A guide to learning disability services and opportunities in Leeds. Being re-written, should be available in summer 1999. Available from Social Services, see above.

***Directory of Bereavement Services in Leeds***

The latest edition of this directory should be available in early 1999. Available from some Health Centres. Produced by: Wheatfields Hospice, Grove Road, Leeds LS6 2AE ☎ 278 7249.

***Health – related Self Help Groups in Leeds***

Available free from the Community Health Council, Templar Street, Leeds LS2 7NU ☎ 245 7461.



**HOME CARE & HOME NURSING SERVICES**

**Approved Private Sector Home Nursing and Home Care Services**

All the organisations listed below are approved by Social Services because they meet certain standards of service quality. The services they offer vary but include: home nursing; home care; 'sitting' services; day care; evening, night-time and weekend care in the home; and emergency alarm link services.

*Correct at time of going to press: Jan 1999*

<b>Arcadia Homecare</b>	661a Roundhay Road, Leeds LS8 4BA	232 9191
<b>British Nursing Association</b>	Provincial House, 26 Albion Street, Leeds LS1 6NX	244 5962
<b>Community Care Line The Beeches Nursing Home</b>	Newfield Drive, Menston Leeds LS29 6JQ	01943 872180
<b>Crossroads</b> <i>this is a voluntary organisation</i>	Stringer House, 34 Lupton Street Hunslet, Leeds LS10 2QW	271 6457
<b>Home Nursing Agency</b>	Gibraltar Farm, Briestfield Road Dewsbury WF12 OPF	01924 464547
<b>J.C. Care Management</b>	Jubilee House, Church Street Morley LS27 9JQ	204 9544
<b>Moorcare Moortown Community Care Service</b>	1 Queenshill Lawn, Stonegate Road Moortown, Leeds LS17 6TH	203 4914
<b>Open Arms Home Care Service</b>	Unit 2, Griffin House, Morley, Leeds LS27 8JW	252 1902
<b>Yorkshire Care Line</b>	17 Highwood Grove, Moortown, Leeds LS17 6EP	237 0968



**FEEDBACK & COMMENTS**

Please print this page to reply.



**ABOUT THIS DIRECTORY**

We hope to be able to re-print this directory in the future and it will be very useful to know what things have been helpful in it and what things could be better. Have we left anything out or got anything wrong?

.....  
.....  
.....  
.....  
.....

**YOUR VIEWS ABOUT SERVICES FOR DISABLED PEOPLE IN LEEDS**

There are a lot of changes being planned at this time (late 1998). If you have any views or comments about what has happened so far, or about what services are needed, please let us know. Your ideas could be part of the planning process.

*continue overleaf if necessary*

.....  
.....  
.....  
.....  
.....

Please return this form to: Mike Sells, Communications & Monitoring, Strategic Services, Social Services Dept., Merrion House, 110 Merrion Centre, Leeds LS2 8QB ☎ 247 8676, e-mail: [mike.sells@leeds.gov.uk](mailto:mike.sells@leeds.gov.uk)





## INDEX

**A**

- Access 6
- AccessBus 6
- Access Committee 6
- Accessible Information 6
- Access to Work Scheme 22
- Accidents and Emergencies 58
- Advice and Information 7
- Advocacy 8
  - Advocacy and Interpreting Service 8*
  - Age Concern Advocacy Service 8*
  - Leeds Advocacy 8*
  - Leeds Centre for Integrated Living 8*
  - Mental Health Advocacy 8*
- Age Concern Leeds 8
- Alarms 8
  - Care Ring Leeds 8*
- Ambulance Services 9
- Assessment 14
- Attendance Allowance 45

**B**

- Benefit Agency Offices 47
- Benefits 45–46
- Blindness 10
- Books on Cassette 32
- Braille and Large Print Unit 6, 32
- Brailling and Taping Service, RNIB & Leeds University 7
- Buses 11

**C**

- Care and Repair 28
- Care Ring Leeds 8
- Careers 12
- Carers Centre 12
- Carers National Association 13
- Cars 13
  - Motability 33*
  - Orange Badges 35*
  - Parking 36*
- Centre for Integrated Living 13
- Children 14
- Chiropody 14
- Citizens Advice Bureaux – C.A.B.s 48–53
- Community Care 14
- Community Care Plan 15
- Community Health Council 15
- Complaints 15
- Continence 16
- Council Tax Benefit 45
- Counselling 16
  - Peer Support 36*
  - Leeds Centre for Integrated Living 30*
  - Support Groups 40*
- Crime 16



## D

D.I.A.L (Disablement Information and Advice Line) 19

Deafness 17–18

*Deaf and Hearing Impaired Service 18*

*Deaf Equality Team 18*

*Deaf People with Additional Learning Disabilities 17*

*Deaf Students Educational Support 18*

*Deaf-Blind Unit 17*

*Hearing Loss/Impairment 26*

Decorating 18

Dental Care 18

Direct Payments 19

Disability Discrimination Act (DDA) 19

Disability Living Allowance 45

Disability Working Allowance 45

Disabled Jobseekers Service 22

Disabled Living Centre (DLC) 20

Discrimination 20

District Nurses 34

## E

Early Education Support Agency 21

Education 21

Electricity 22

Employment 22–23

*Training 22*

Energy and Environmental Centre 23

Energy Efficiency 23

Equipment 23

## F

Family Fund Trust 24

Family Placement 24

## G

Gardening 25

Gas 25

Grants 25

## H

Health Benefits 45

Hearing Loss/Impairment 26

Holidays 26–27

*Holiday Care Service 27*

Home Care 27

Home Care & Home Nursing Services 62

Home Energy Efficiency Scheme 23

Hospices 28

Housing 28

Housing Benefit 46

Housing Grants 28

Housing Repairs 28

## I

Incapacity Benefit 46

Income Support 46

Independent Living Fund 29

Invalid Care Allowance 46

**J**

Job Seekers Allowance 46

**L**

Learning Disability 30

Leeds Centre for Blind and Partially  
Sighted People 6, 10, 30

*Braille and Large Print Unit 6*

*Talking Magazine & Newspapers 7*

Leeds Centre for Deaf and Blind  
People 17

Leeds Centre for Integrated Living 30

Leeds City Council 6

*Deaf Equality Team 18*

*Education 21*

*Equal Opportunities 6*

*Leeds Disabled People's Equality  
Committee 25*

*Welfare Rights Unit 43*

Leeds Community and Mental Health  
Services Teaching N.H.S. Trust  
(C.M.H.) 59

Leeds Disabled People's Equality  
Committee 25

Leeds Involvement Project 15

Leeds Teaching Hospitals N.H.S. Trust  
(L.T.H.T.) 58

LeedsCard 30

Legislation 31

Leisure 31

LEODIS (Leeds Employment  
Opportunities Disability) 22

Libraries 32

Lipreading 18

**M**

Macmillan Nurses 34

Marie Curie Nurses 34

Martin House Hospice for Children 28

Meals on Wheels 33

Mobile Libraries 32

Motability 33

**N**

N.H.S. Health Information Service 34

N.H.S. Hospital Services 58

Night Care Nursing 34

Nurses 34

**O**

Occupational Therapists 35

Opticians 10

Orange Badges 35

**P**

PACT (the Placing, Assessment and  
Counselling Team of the Department of  
Employment) 22

Parent Partnership Project 21

Parking 36

Peer Support 36

Physiotherapy 36

Publications 60



## R

- Rail Passes 11
- Rail Travel 37
- Rehabilitation 37
- Residential Care 37
- Resource Centres 37
- Respite Care 38
- Rubbish Collection 38

## S

- Severe Disablement Allowance 46
- Sharing Care 39
- Shopmobility 39
- Sight Loss 10
- Sign Language 39
- Sign Language Classes 39
- Sign language interpreters 39
- SKILL National Bureau for Disabled Students 12
- Social Fund 46
- Social Services Offices 56–57
- Sport 40
- St.Gemma's Hospice 28
- Stroke Association 40
- Support Groups 40
- Supported Employment Scheme (SES) 22

## T

- Talking Magazine 7
- Talking Newspapers 7
- Taxis 41

- Telephones 41
- The Energy Unit, Leeds City Council 23
- Through the Maze* 30
- Toilets 41
- Twilight Nurse Service 34

## V

- VAT 42
- Voluntary Action–Leeds 42
- Voluntary Organisations 42
- Voluntary Resource Co-ordinators 42

## W

- Welfare Rights Advice Surgeries 54
- Welfare Rights Unit 43
- Wheatfields Hospice 28
- Wheelchair Voucher Scheme 43
- Wheelchairs 43
- William Merritt Disabled Living Centre 13, 20
- World Wide Web 44

## Y

- Yorkshire Association for Disabled People 6
- Yorkshire Braille Service 7
- Young Adult Team 37



HOW TO USE THIS GUIDE

You may find the following notes useful for directory navigation.



Clicking the following buttons on the toolbar as shown above will help you as follows;

To go to the next page:



To go to the previous page:



To go to the Front Cover:





To go to the Back Cover:




To return to the page you were previously on:



On the contents page or index, when the hand tool pointer (  ) changes to a pointing finger like this , (  ) this indicates that if you click then you will find yourself on the page of the relevant entry or button action.

**NOTE:** No matter which page you are on, you can always return to the contents page by clicking the above button

**NOTE:** If something is written in blue and has the symbol  beside it, then you can look it up elsewhere in the booklet by clicking over the symbol.

**NOTE:** Acrobat Reader, the software that is running this directory, has its own help file on the end of the toolbar for advanced navigation and search facilities

...and another thing!

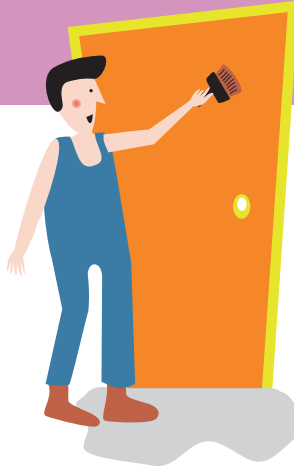
...to thank you.



# complaints & compliments

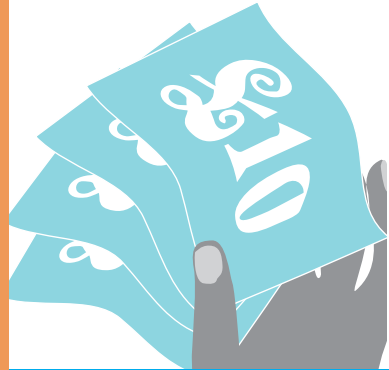
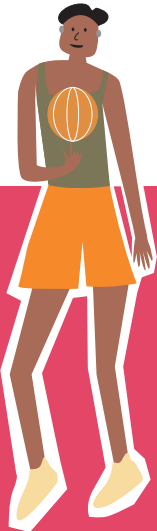


# decorating



# equipment

# sport



LEEDS  
CITY COUNCIL